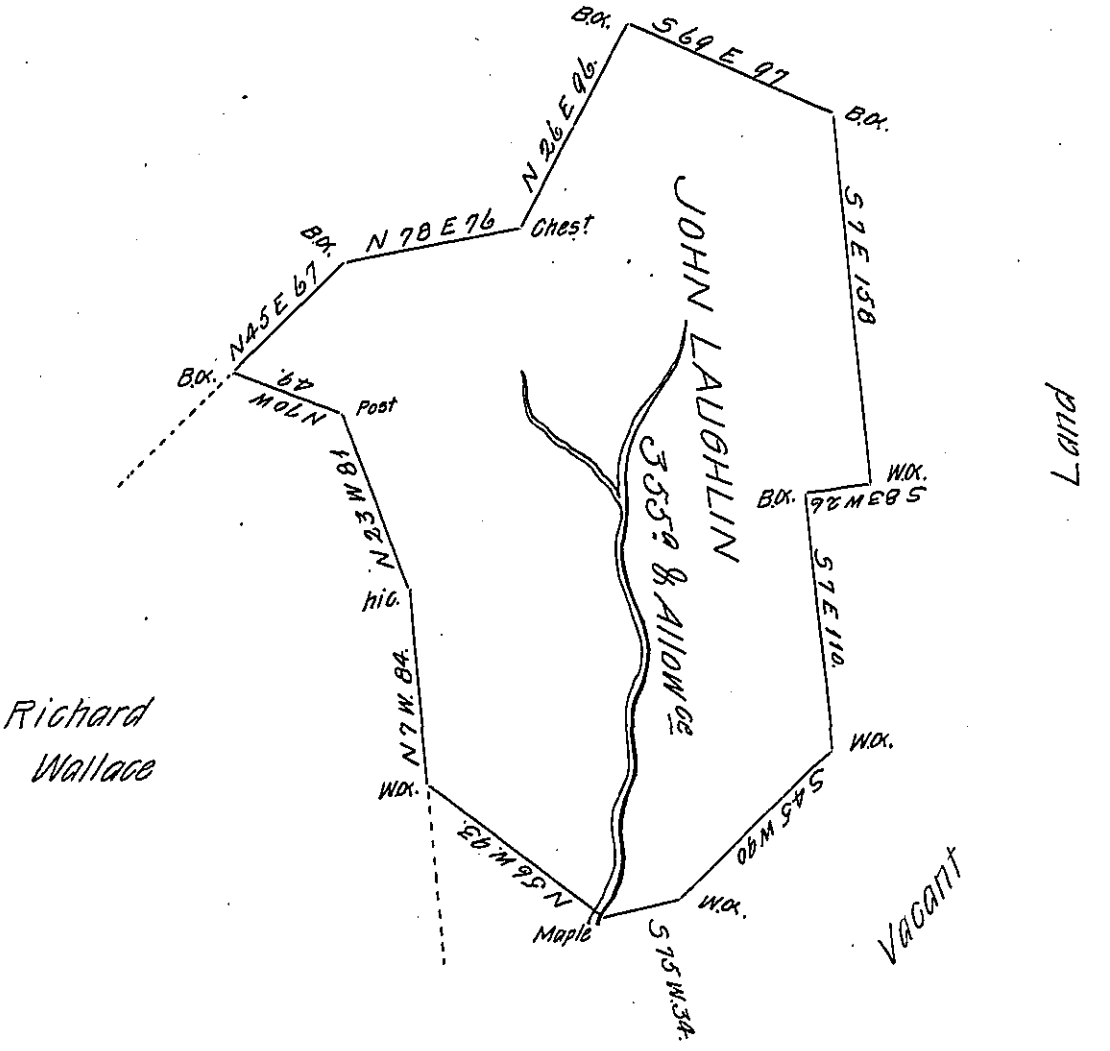


Vacant Land



Survey'd on the 16th day of May 1785 to John Laughlin, the above described Tract of three hundred & fifty five acres & allowance of Six P Cent Situate on a small run that empties into the North side of Kiskaminates, - Including an Improvement, adjoining land of Richard Wallace & the claim of Thomas Burbridge, in Westmorland County By warrant of the 3^d day of January 1785.

Joshua Elder D.S.

John Lukens Esq. S. Genl

IN TESTIMONY that the above is a copy of the original remaining on file in the Department of Internal Affairs of Pennsylvania, made conformably to an Act of Assembly approved the 16th day of February, 1833, I have hereunto set my Hand and caused the Seal of said Department to be affixed at Harrisburg, this thirteenth day of September 1905.

Joseph P. ...
Secretary of Internal Affairs.